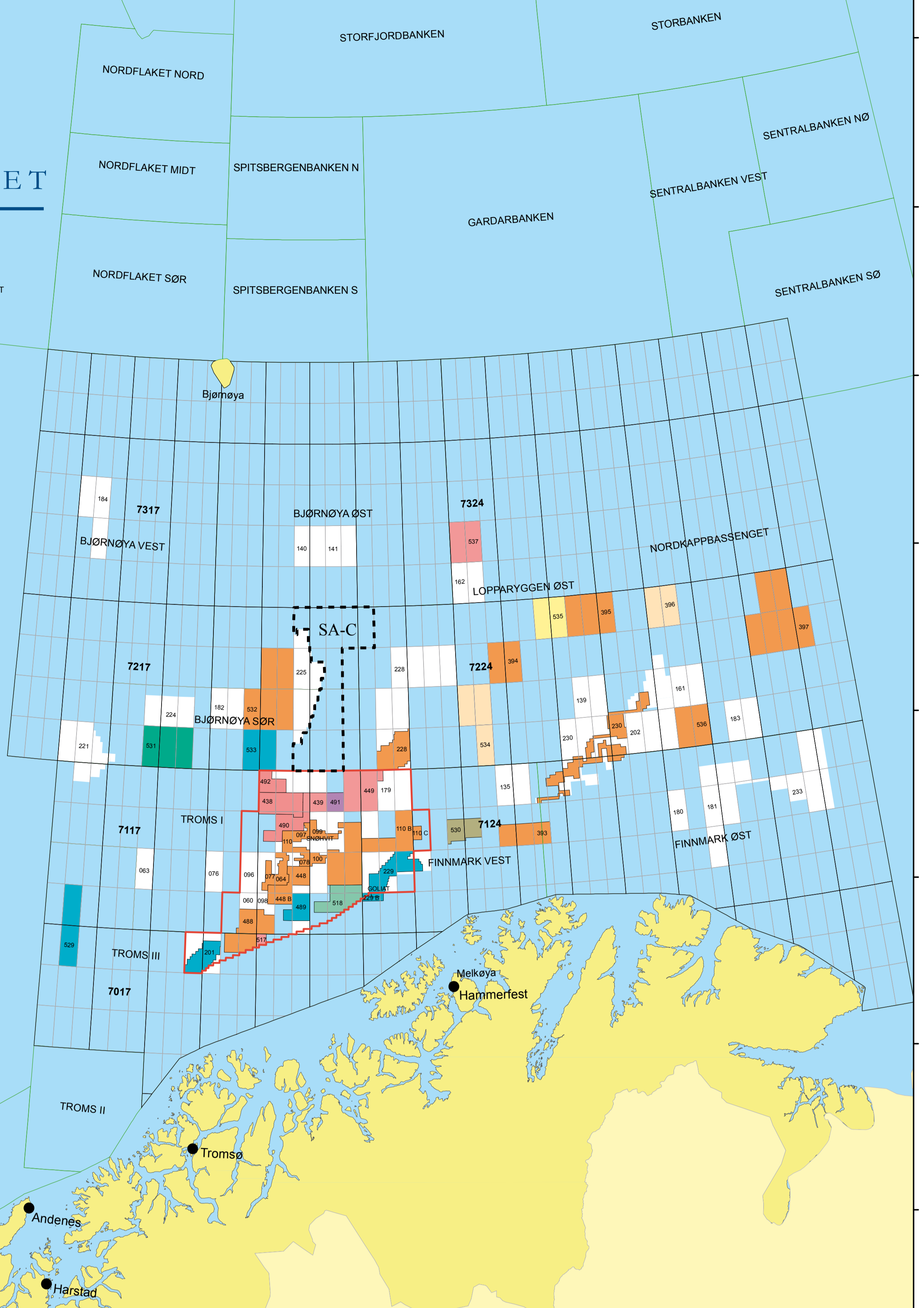
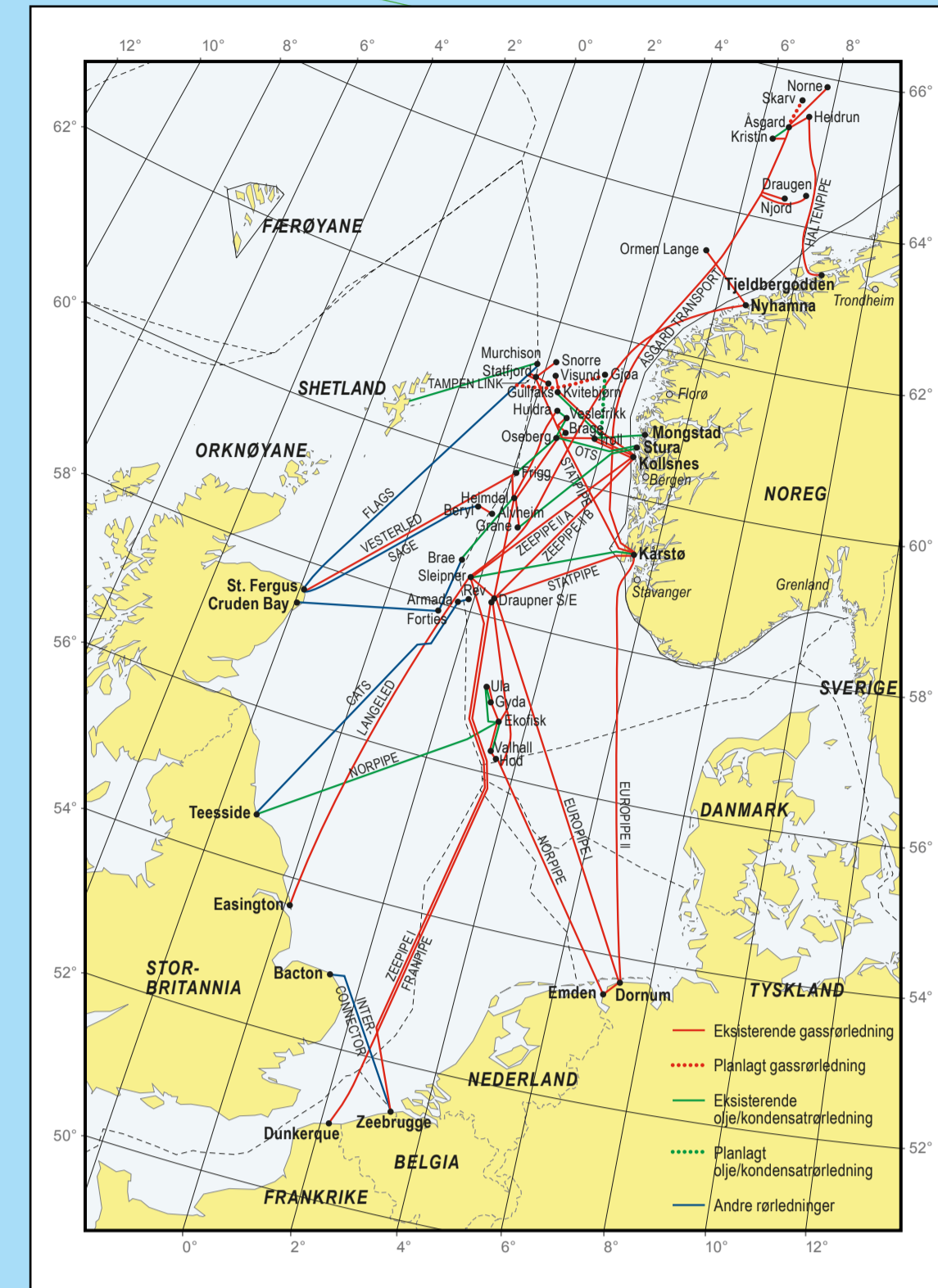
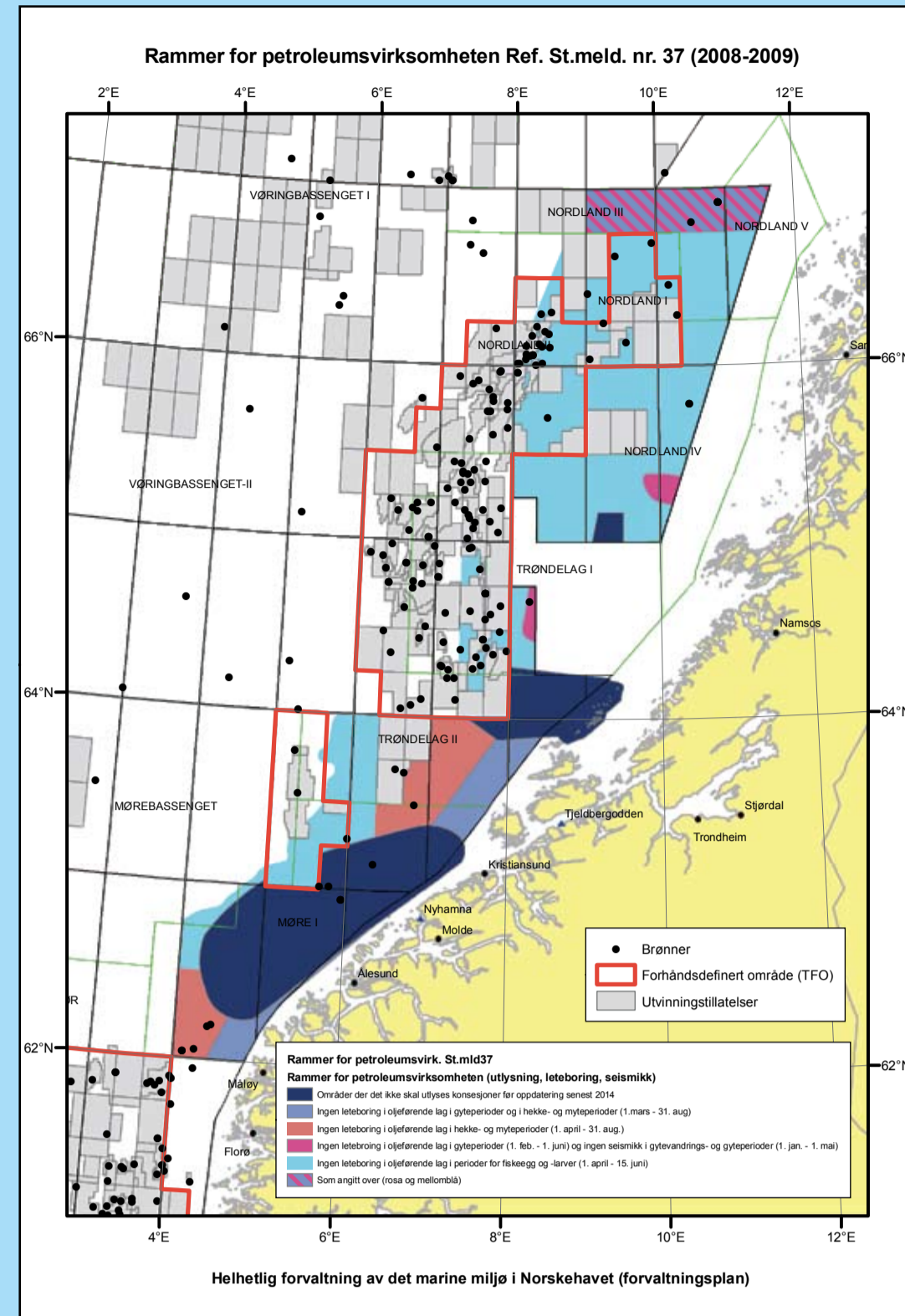
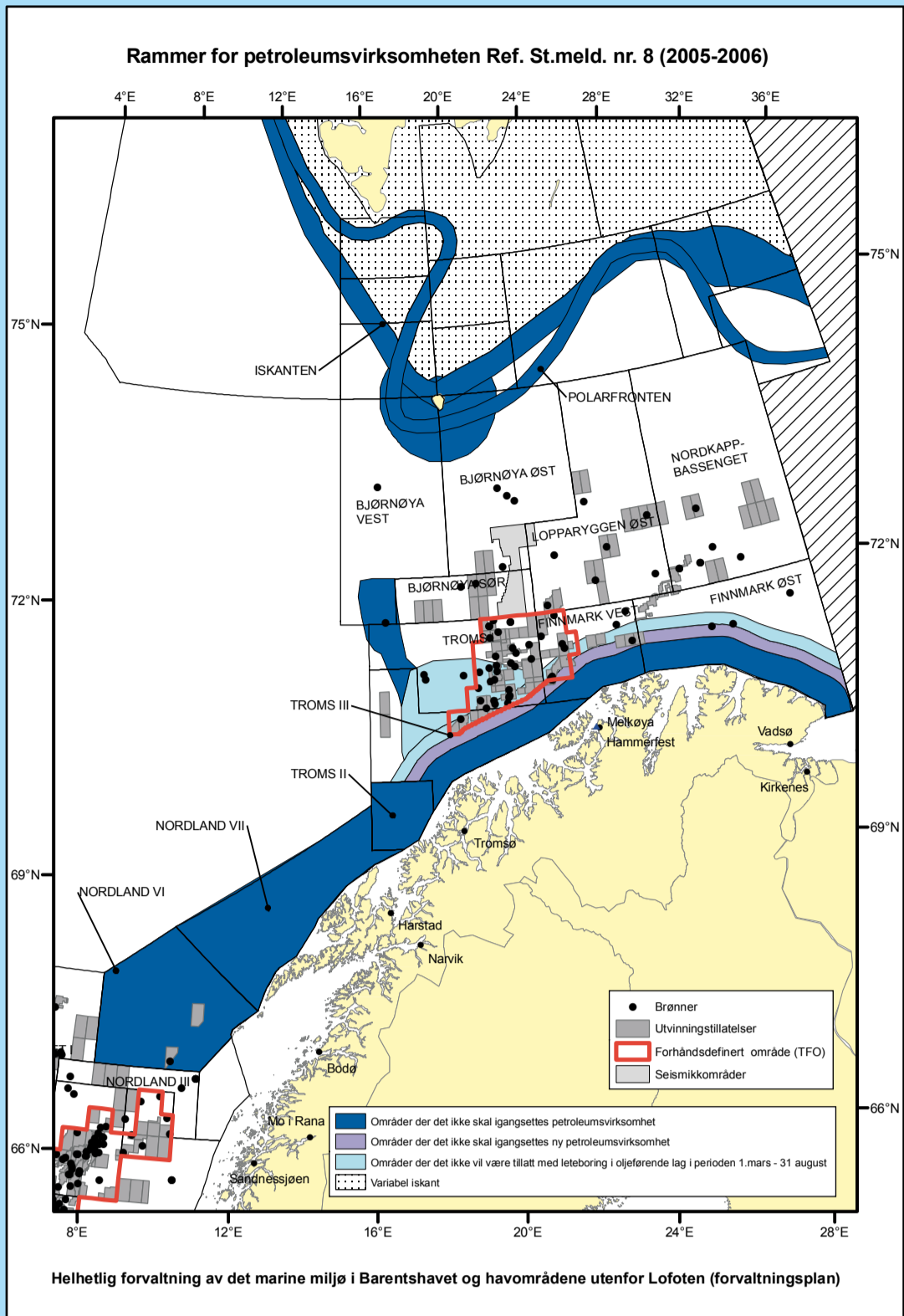


# Den norske kontinentalsokkel

Utvinningsstillatelser per 2. november 2009

Utarbeidet av Oljedirektoratet

[www.npd.no](http://www.npd.no)

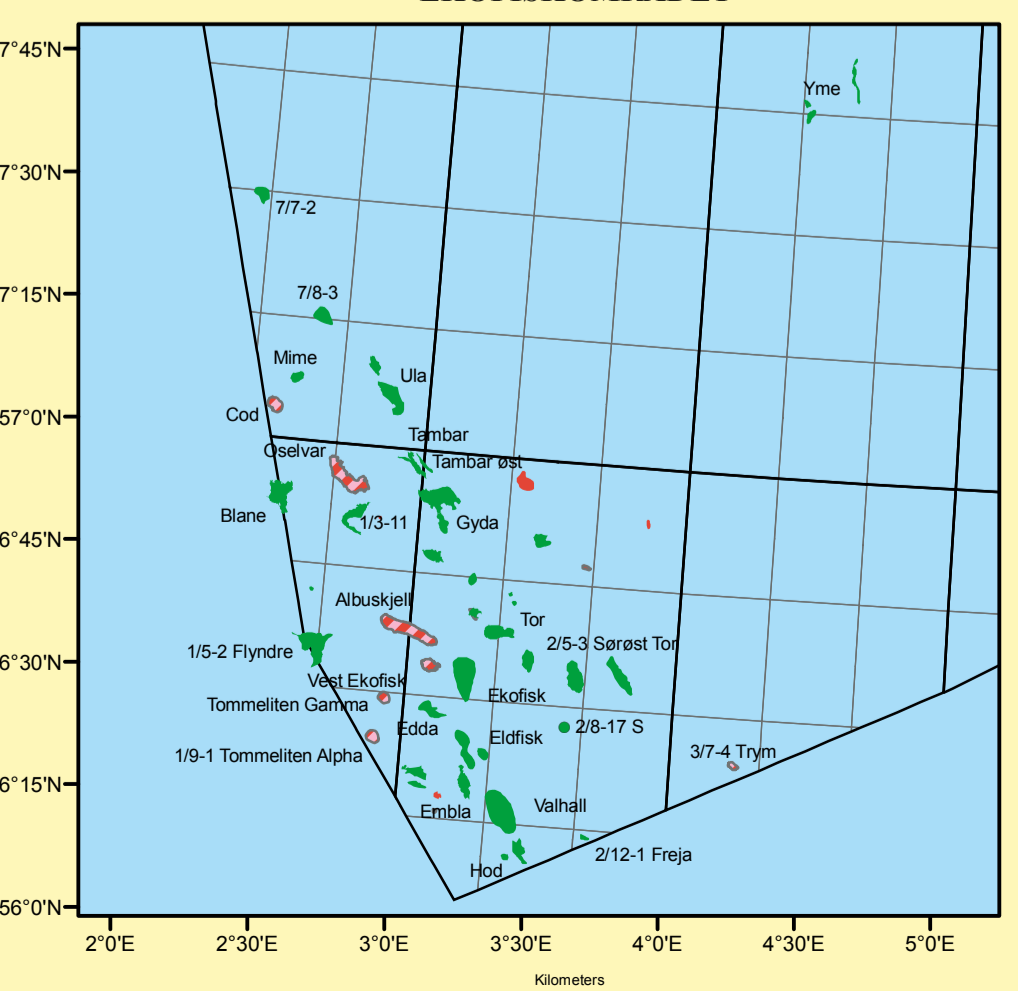
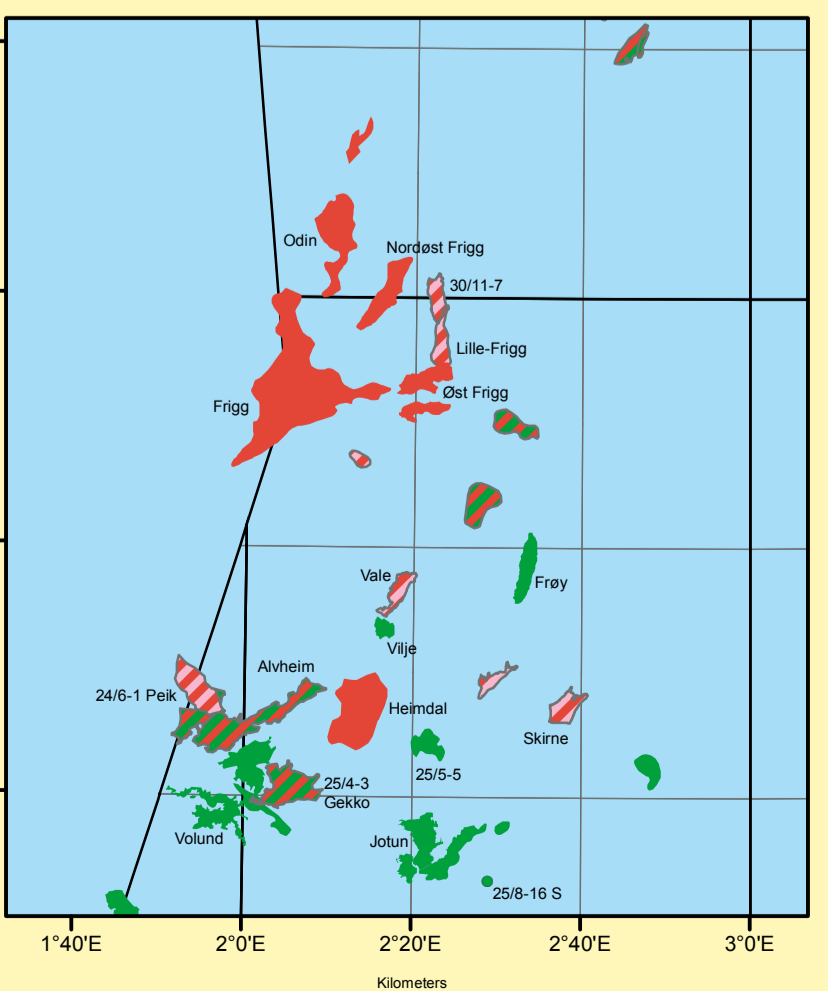
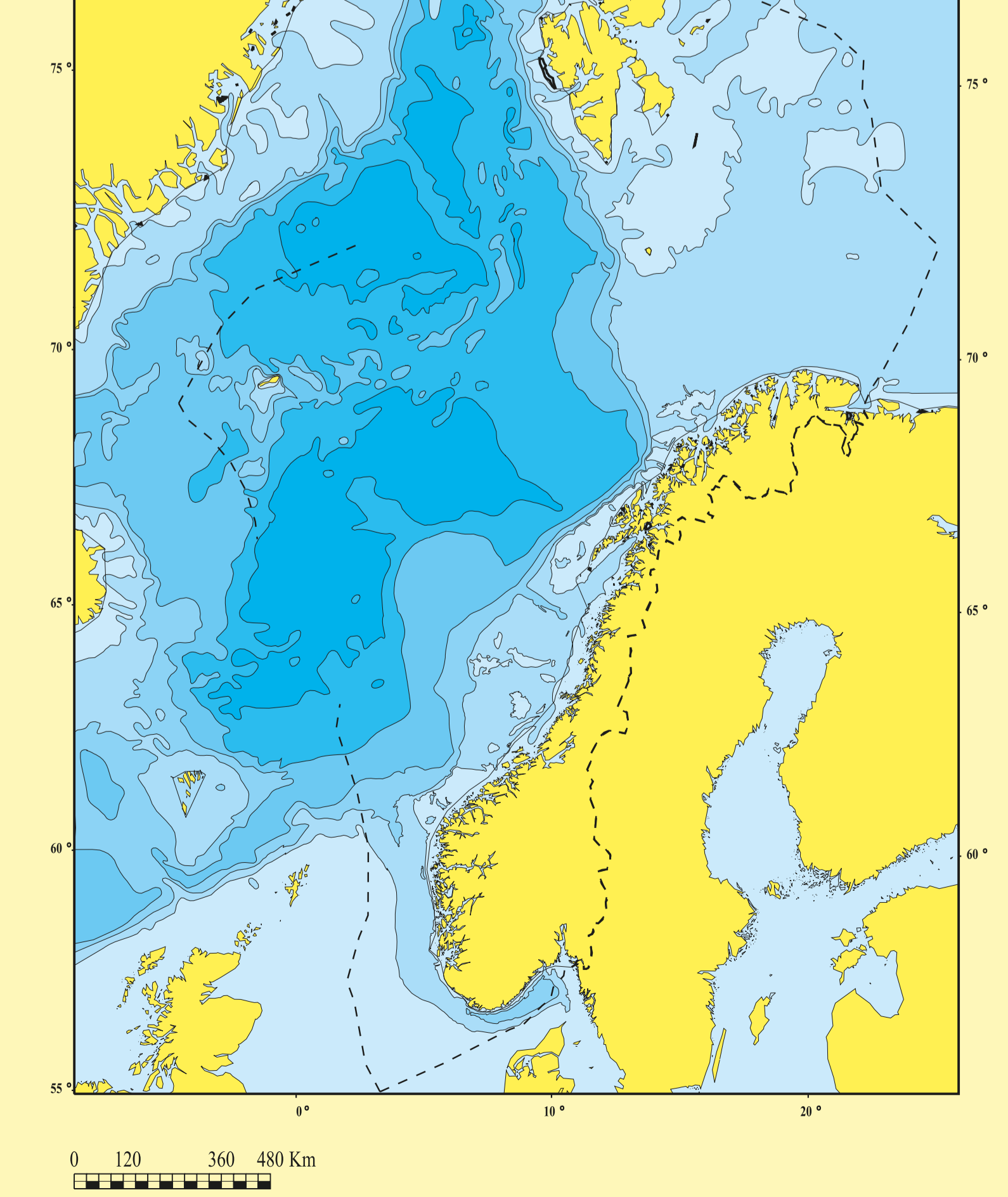
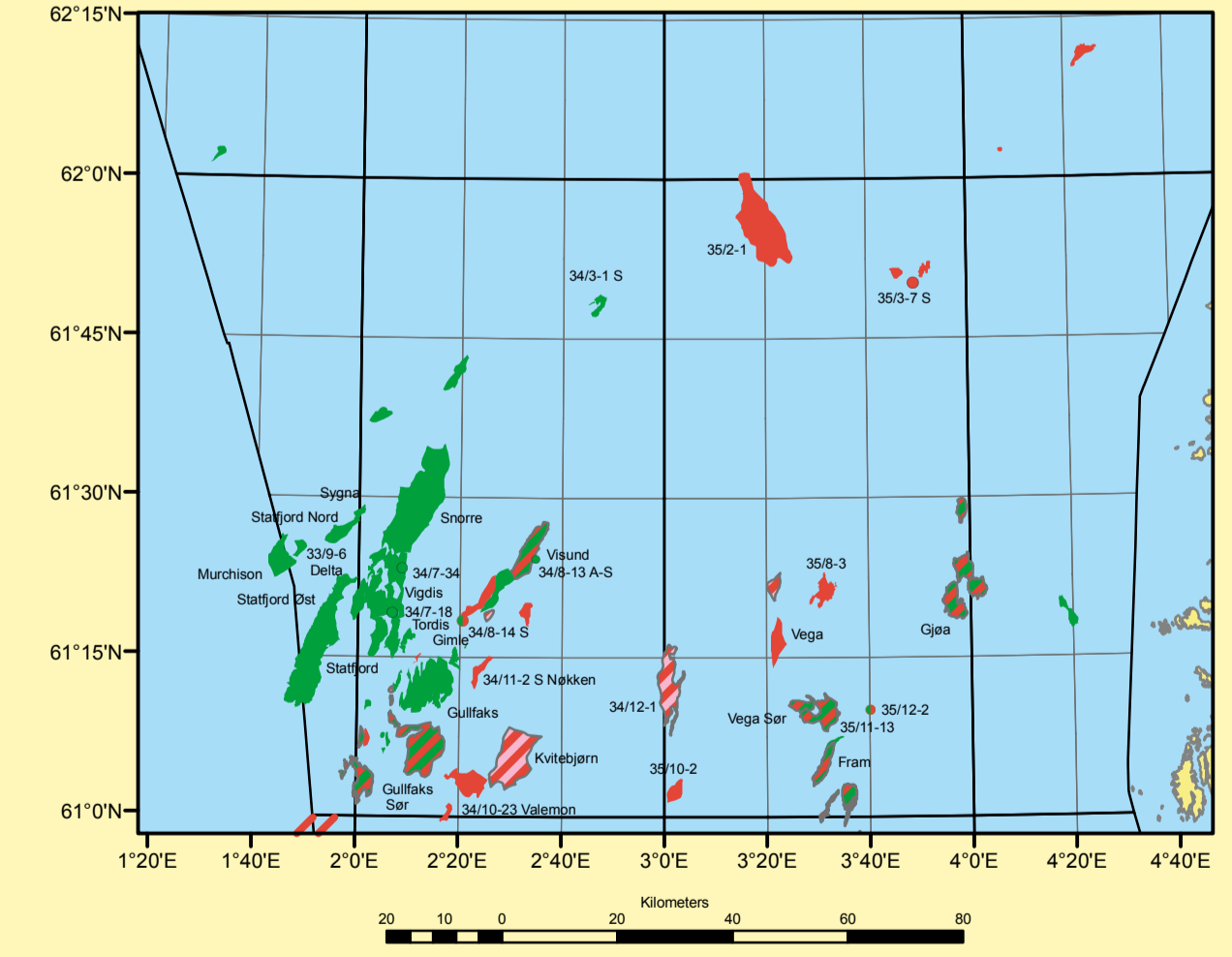
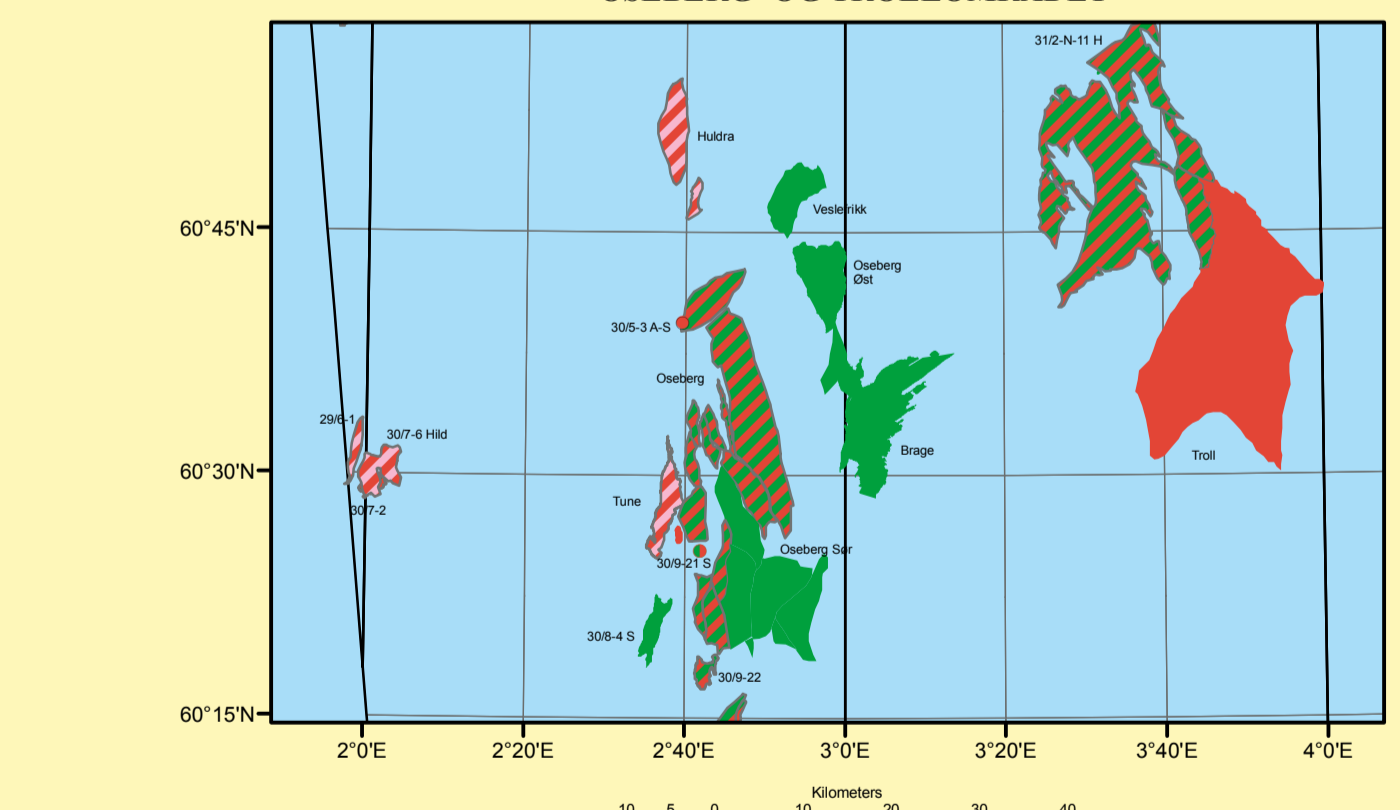
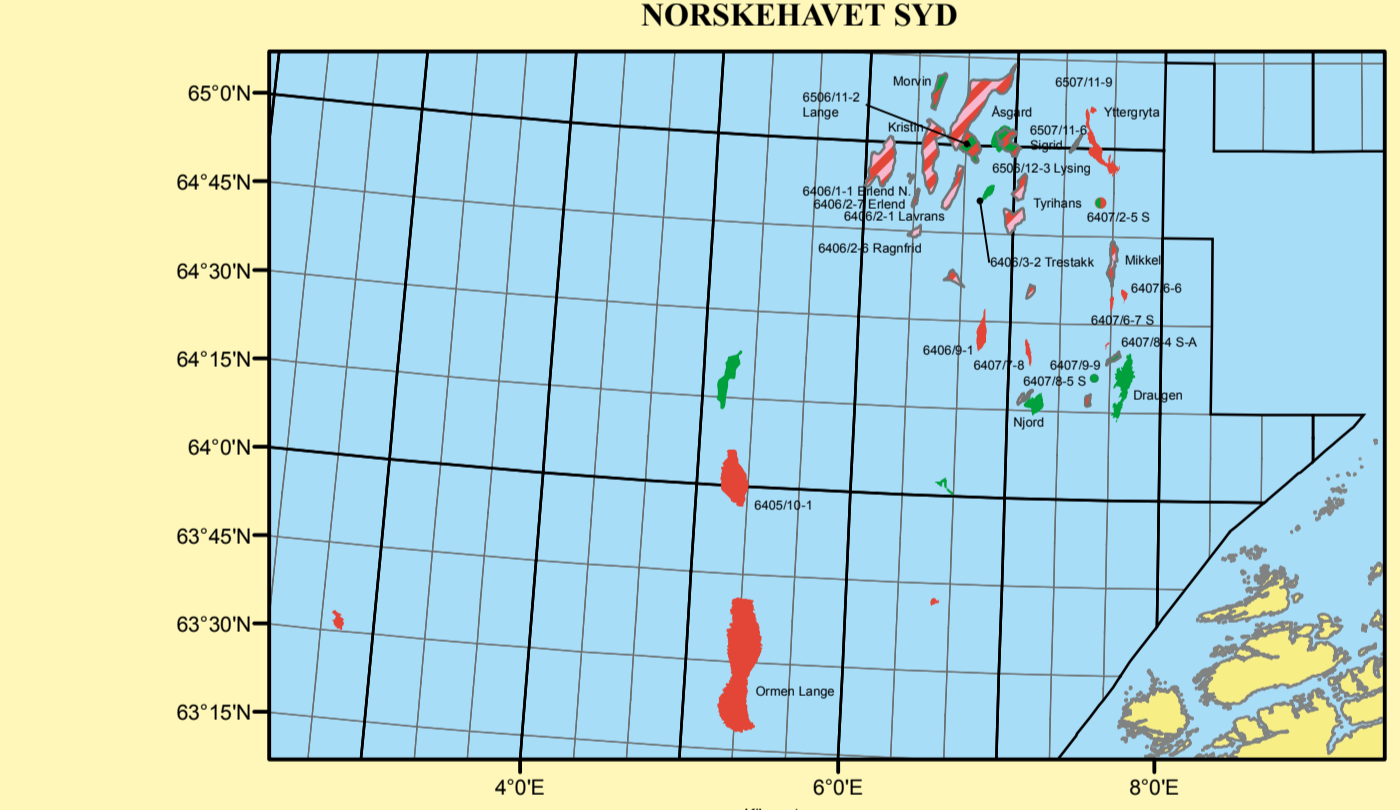
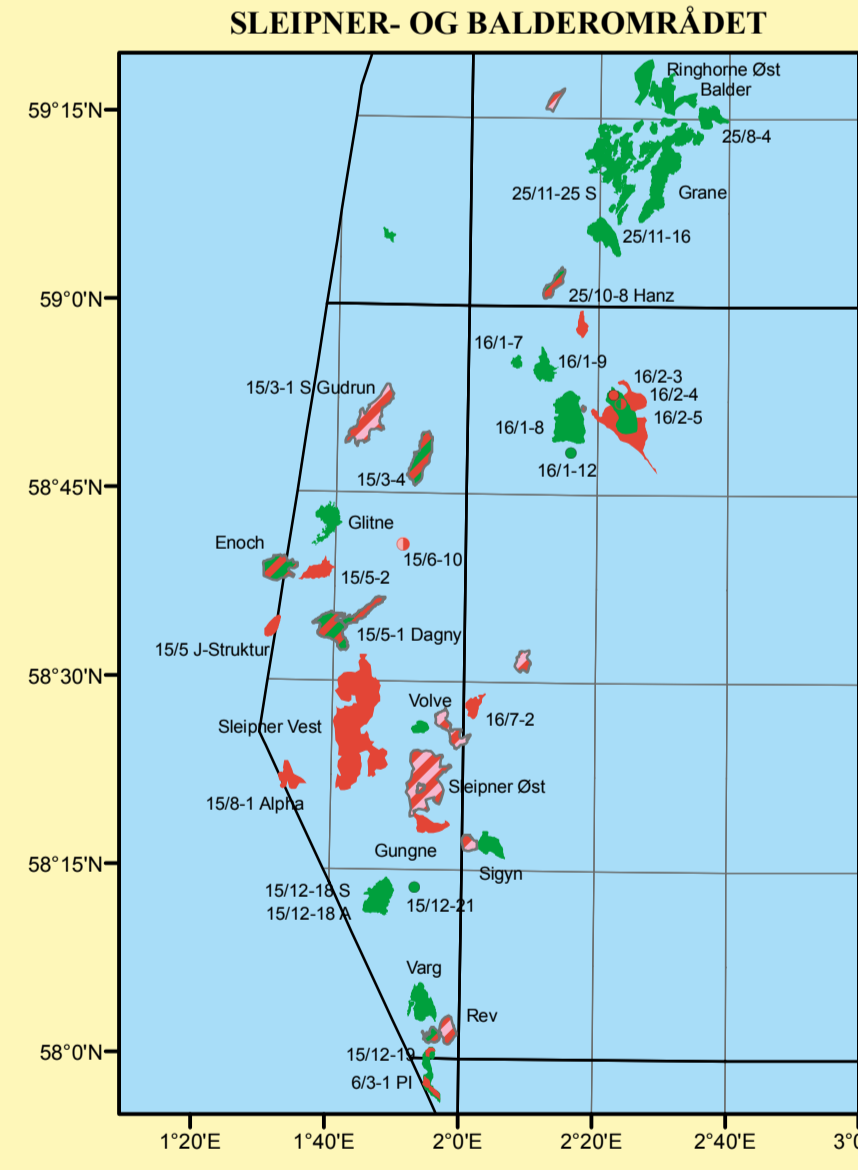
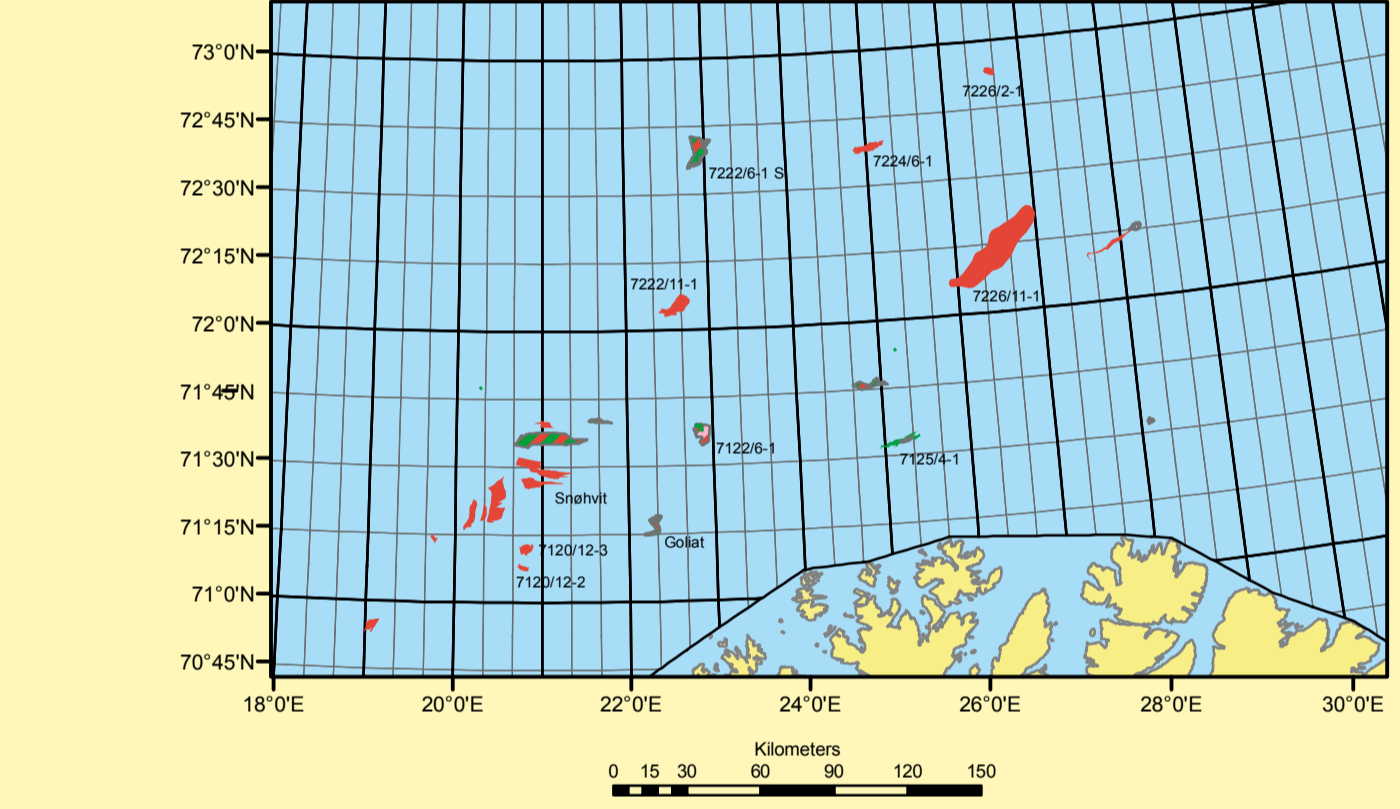
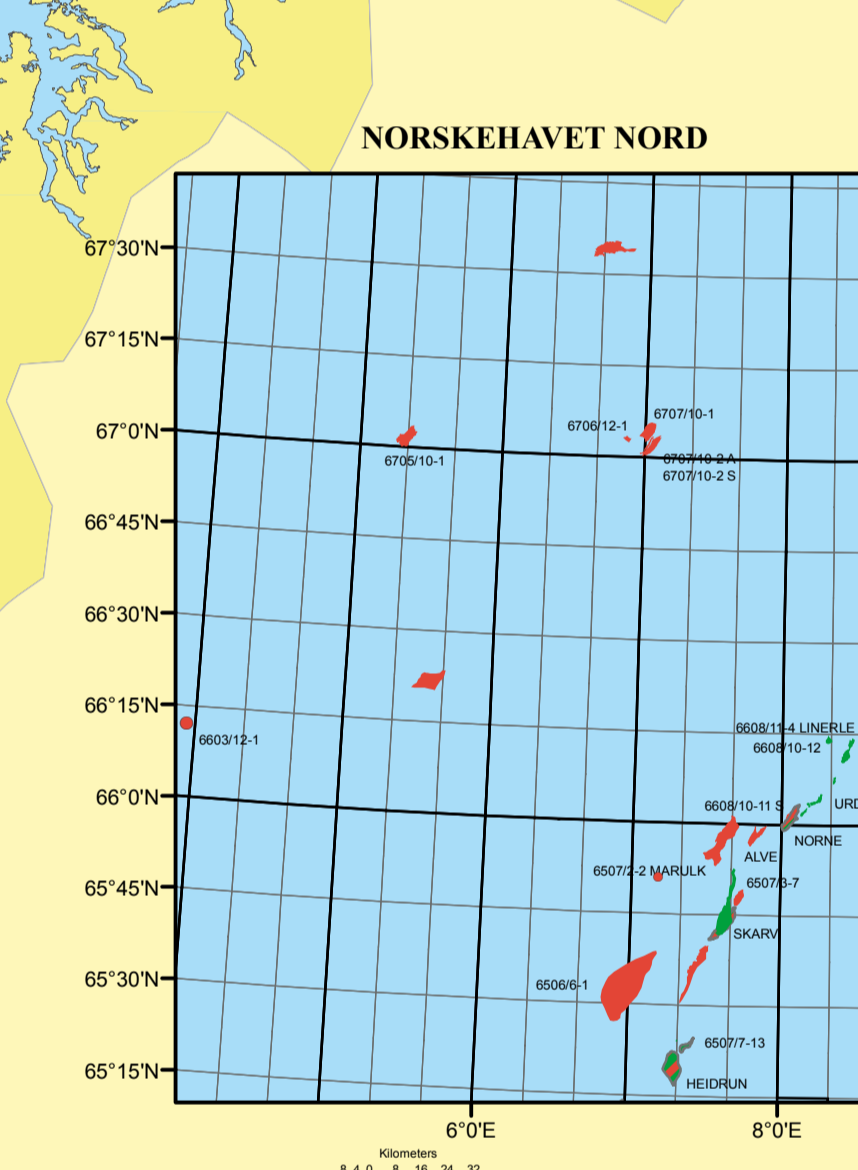


- Operatører:**
- Aker
  - BG Group
  - BP
  - Centrica
  - Chevron
  - ConocoPhillips
  - Dana
  - Det norske oljeselskap
  - Discover
  - DONG
  - E.ON Ruhrgas
  - VNG Norge
  - ENI
  - Enterprise
  - ExxonMobil
  - GDF SUEZ
  - Hess
  - Idemitsu
  - Lotos
  - Lundin
  - Marathon
  - Mærsk
  - Neszen
  - Nol Energy
  - Noroco
  - North Energy
  - OMV Norge
  - Petro-Canada
  - Premier
  - Reusis
  - Rocksource
  - RWE DEA
  - Shell
  - StatOil
  - StatOil Mærsk
  - Talisman
  - Total
  - Wintershall
  - Tibetalevert
  - Stratigrafisk del utvinningstillatelse

Projeksjon: UTM senterm. 21 Ø  
Målestokk: 1:1 900 000

- TFO 2009
- Seismikkområder

- Olje** (Green)
- Gass** (Red)
- Olje m/gass** (Blue/White)
- Gass/kondensat** (Yellow/White)



0 120 360 480 Km